



PFLAG phoenix

Parents, Families and Friends ~~of~~ ^{And} Lesbians and Gays
(and BiSexual, Transgender, and "Questioning" People)

PFLAG Phoenix Newsletter

Events and information

January 2020

In This Issue

January support meetings

Coming soon: PFLAG Scholarships

Point Foundation Scholarships

Thank You!

Greetings!

Everyone at PFLAG Phoenix wishes you a happy, healthy, and prosperous New Year! This will be another year in which we need to be **involved** and **ready** for whatever comes our way. And remember, PFLAG Phoenix is always here for you.



Quick Links

Meeting times and locations

Become a member

About our chapter

Our sponsors

Our Resources page

Our Calendar of events

Don't forget to "like" our [Facebook page](#), and if you haven't yet, please check out our [website](#) too. For information about what else is going on in January, check out our [calendar of events](#).

Sincerely,

PFLAG Phoenix
602.843.1404

January support meetings:

Friday	January 3	7:00pm - 8:30pm	Tempe
Thursday	January 9	7:00pm - 8:30pm	Scottsdale/PV
	Check their website		Native American

Monday	January 21	7:00pm - 9:00pm	Phoenix
Tuesday	January 21	7:00pm - 9:00pm	Mesa

General information about all our support meetings can be found [here](#).

It's January and that means PFLAG Phoenix's 2020 Scholarship package will soon be available for download on our website!

Keep an eye out for more information in our upcoming newsletters these next few months or check our [website](#) for the new 2020 scholarship application. And of course you can always e-mail us at info@pflagphoenix.org if you have any questions.



2020

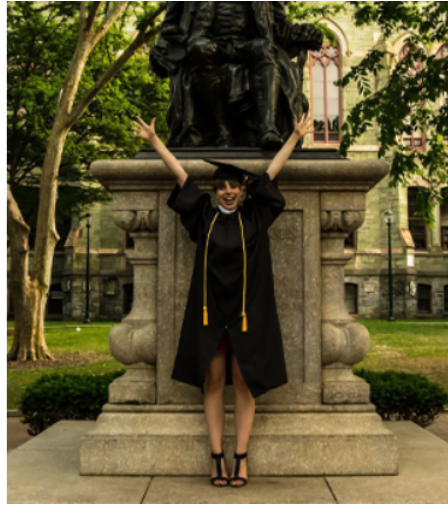
Scholarship Application Packet

Presented By:

PFLAG Phoenix

PFLAG is the organization of parents, families, friends, and allies
United with LGBTQ+ people to *move equality forward!*

Calling all LGBTQ+ students



Point Foundation is now accepting applications to become a Point Scholar! Apply for a Point Foundation scholarship today! Deadline is Jan 27th, 2020. Check out their [website](#) for more information.

Thank you for your support!

And finally we'd like to thank all the people who joined PFLAG Phoenix as members during this membership drive. And for those of you who still have not joined or renewed, there is still time. Please visit our [website](#) where you will find 4 easy ways in which to pay and 6 different memberships and 4 sponsorships from which to choose. There is sure to be one that fits your personal budget.

We'd also like to remind you of two other ways that many people have chosen to support PFLAG Phoenix as well:



Have You Considered United Way?

We have great news for those of you who are looking for a good way to support PFLAG Phoenix but do not have the time to volunteer. **United Way** and **United Way Bank of America** have been very important sources of our (PFLAG Phoenix) income.

Anyone working for an employer who participates in an annual campaign for United Way may designate all or part of their donation to **PFLAG Phoenix** by entering agency code: **1016**. And the best part is there are even some companies that match all or a percentage of these donations! Maybe yours is one of them.

What if **PFLAG Phoenix** is not on your company's list? Then **PFLAG Phoenix** can be written in, but you must remember to include **PFLAG Phoenix's** agency code, which is **1016**.

We cannot express enough how much this helps us and how much we appreciate these donors. We thank you from the bottom of our hearts for your generosity!

OR

**Do you shop at Amazon?
Great news if you do!**



If you shop Amazon, you can easily switch to [AmazonSmile](#) and use your same Amazon account. By shopping on [AmazonSmile](#), the [AmazonSmile](#) Foundation will donate 0.5% of the price of eligible purchases to PFLAG Phoenix. Simply go to [smile.amazon.com](#), select **PFLAG Phoenix as your charitable organization, and you are ready to shop.**